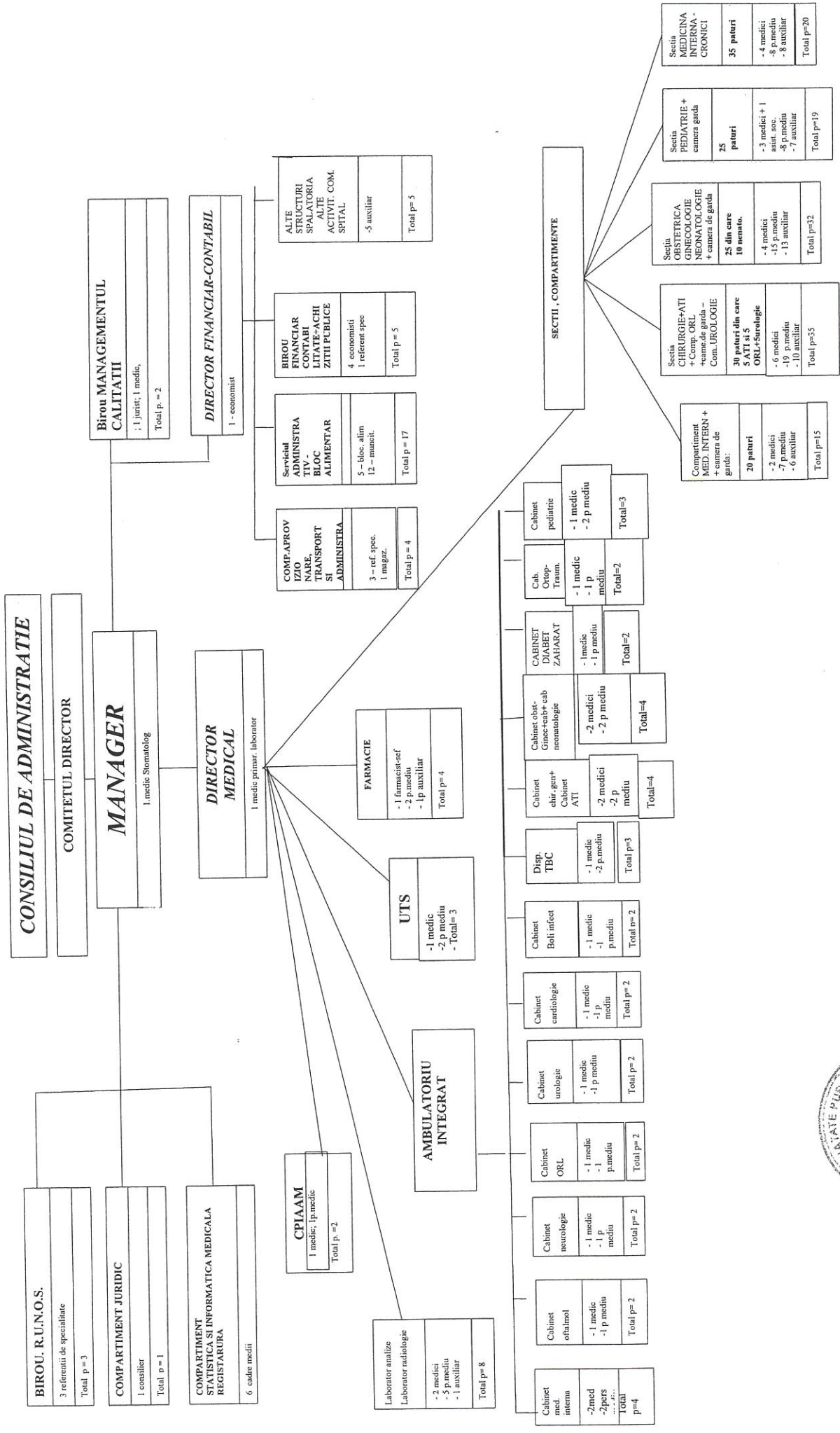


AMEXA LA MCL Nr. 32/20.02.2024



MANAGER  
Dr. Luca Claudia Maria

ou

ou

Unitatea Spital Orasenesc Sannicolau Mare  
 Adresa Str. Timisorii, nr.14  
 Tel/fax 0256/371770, fax 0256/370697

STAT DE FUNCTII valabil din 01.02.2024

DISPENSAR TBC

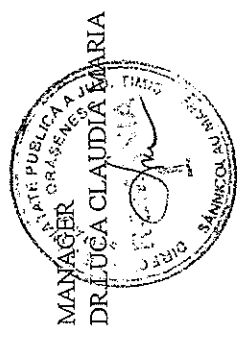
Nr. Crt	Denumirea functiei conf. Legii nr.284/2010	Specialitatea	Nivelul postului	Cuar-tum	SALAR 01.01.2024	Numele si prenumele	Observatii
0	1	2	3	4	5	8	9
1	medic primar	5 pneumologie	S	1	16017	BOROS ADRIAN FRANCISC	
<b>TOTAL MEDICI</b>							

PERSONAL MEDIU SANITAR SECTIE

2	asist.med.	0 imed.gen.	PL	1	4043	VACANT	
3	asist.med.pr.	5 imed.gen.	PL	1	5099	SLOBODA MITRUTA	
<b>TOTAL PERS.MEDIU SAN.</b>							
<b>TOTAL GENERAL</b>							

Total posturi 3 din care: functii de conducere 0

La salariul de Baza- 25158 se mai adauga  
 spor conditii - 13666  
 indemnizatie hrana-1041  
**TOTAL GENERAL 39865**



MANAGER  
 DR. LUCĂ CLAUDIA MARIA

DIRECTOR FIN. CONTABIL  
 EC.PREDESCU IOANA SIMONA

SEF BIROU RUCOS  
 TIG LILIANA

Unitatea Spital Orasenesc Sannicolau Mare  
 Adresa Str. Timisoara, nr. 14  
 Tel/fax 0256371770, fax 0256370697

STAT DE FUNCTII  
 VALABIL DIN 01.02.2024

COMPARTIMENT INTERNE+AMBULATORIU INTEGRAT-CABINET SPEC.INTERNE  
 NUMAR PATURI = 20

Nr. Ct.	Denumirea functiei conf. Legii nr.153/2017	Specialitatea	Nr. studii	Cuadrant	Numele si prenumele	Observatii
		gra.dabia				
1	medic specialist coordonator	4 interne	S	1	VACANT	Delegat YOCHITA ANCA ANDRE
2	medic primar	5 interne	S	1	KOZICEC CAROL AD.	menintat in activitate
<b>TOTAL MEDICI</b>						
<b>AMBULATORIU INTEGRAT</b>						
<b>CABINET INTERNE</b>						
3	medic specialist	4 interne	S	1	FRAJILA RAMONA	
4	medic specialist	4 interne	S	1	VACANT	
5	asistenta medicala princ.	4 med.gen	PL	1	MISCU RAMONA	
6	asistenta medicala princ.	5 med.gen	PL	1	MICULESCU DANA SLAVITA	
<b>PERSONAL MEDIU SANITAR SECTIE</b>						
7	asist.med.princ.	5 med.gen	PL	1	BERCIU MARIA	
8	asist.med.princ. coordonator	5 med.gen	S	1	FLACINTA AURORA GRATIELA	
9	asist.med.princ.	5 med.gen	PL	1	SCRIDON CATALINA	
10	asist.med.princ.	5 med.gen	PL	1	CIOCANI RA FAELIA	
11	asist.med.princ.	4 med.gen	PL	1	DIPTAN LUMINITA	
12	asistent medical	0 med.gen	PL	1	MICSA REBECA	
13	asistent medical	0 med.gen	PL	1	OPREAN ANCA	
<b>TOTAL PERS.MEDIU SAN</b>						
<b>PERSONAL AUXILIAR</b>						
14	infirmera	5	G	1	VACANT	
15	infirmera	5	G	1	VACANT	
16	infirmera	5	G	1	FLOREA ANA	
17	ingrijitor	0	G	1	FARCA ALEXANDU	
18	ingrijitoare	0	G	1	CIUCA IULIANA	
19	infirmera	2	G	1	IONESCU PETRONELA	
<b>TOTAL PERS.AUXILIAR</b>						
<b>TOTAL GENERAL</b>						

SECTIA CHIRURGIE+AMBULATORIU INTEGRAT-CABINET CHIRURGIE GENERALA

NUMAR PATURII = 30 din care 5 paturi ATI si 5 compartiment ORL		MUTNYASZKY LAURA	
20	medie sef sectie chirurgie g	4 chir.gen.S	1 VACANT
21	medie primar	5 chir.gen.S	1 GEAMBAZU GEORGE
22	medie specialist	3 para.S	1 MANGEAC OVIDIU
TOTAL MEDICI			
AMBULATORIU INTEGRAT			
CABINET CHIRURGIE			
23	medie primar	3 para.S	1 SZGYARTO ALEXANDRU MIHAI
24	medie primar	4 para.S	1 MUTNYASZKY LAUR cabinet ambulatoriu(DEL.SEF SEC
25	asistent medical princ.	5 med.gen.PL	1 SUCIU LUMINITA
26	asist.med.pr.	5 med.gen.PL	1 BRATILOV MARIUS
PERSONAL MEDIU SANITAR SECTIE			
27	asist.med.princ. Sef sectie	5 med.gen.PL	1 MILICICI NICOLETA ALINA
28	asist.medical	2 med.gen.S	1 PESCAR IVANA DRAC CIM suspendat
29	asist.medical princ.	2 med.gen.PL	1 DEDIU ANDREEA delegat ATI
30	asist.medical	0 med.gen.PL	1 TELBIS ALEXANDRA
31	asistent medical princ.	3 med.gen.PL	1 FRANIOV IASMINA MANUELA
32	asistent medical princ.	5 med.gen.PL	1 BILT STELA
33	asistent medical princ.	3 med.gen.PL	1 PUSCAS DIANA MARIORA
34	asist.medical	0 med.gen.PL	1 CIUS ALEXANDRA
35	asist.medical	0 med.gen.PL	1 SECOSAN NAOMI
36	asist.medical	0 med.gen.PL	1 CRISTA DRAGANA
37	asis medical	0 med.gen.PL	1 VACANT
TOTAL PERS.MEDIU SAN			
PERSONAL AUXILIAR			
38	infiriera	5	1 LUNGUREANU ANA
39	infiriera	4	1 KALAFIS NICUTA
40	infiriera	5	1 BORSOS MARIANA
41	ingrijitoare	3	1 BONTEA OFELIA
42	ingrijitoare	4	1 VACANT
43	ingrijitoare	5	1 MARIES ANGELA
44	infiriera	4	1 BUJANOVSCU MARIA
45	ingrijitoare	4	1 VACANT
TOTAL PERS.AUXILIAR			
TOTAL GENERAL			

dati 25.01.2024

COMPARTIMENT ORL

NUMAR PATURI =5

46	medic specialist	2	ORL	S	1	VACANT
47	asistent medical	0	med.gen	PL	1	VACANT
TOTAL						

AMBULATORIU INTEGRAT

CABINET ORL

48	medic primar	3	ORL	S	1	POP TRAIAN FLAVIU
49	asistenta med princ.	4	med.gen	PL	1	VARVAS IONELA delegata chirurgie
TOTAL GENERAL						

COMP. UROLOGIE

NUMAR PATURI =5

50	medic specialist	2	urologie	S	1	VACANT
51	asistent med	2	med.gen	PL	1	VACANT
TOTAL						

AMBULATORIU INTEGRAT

CABINET UROLOGIE -FARA CORESPONDENT PE SECTIE

52	medic specialist	2	urologie	S	1	PLESA DAN SEBASTIAN
53	asistent medical	0	med.gen	PL	1	VACANT
TOTAL MEDICI						

COMPARTIMENT ATI

NUMAR PATURI = 5

54	medic primar	4	ATI	S	1	NEGREA CRISTIANA MARIA
TOTAL MEDICI						

PERSONAL MEDIU SANITAR SECTIE

55	asist.med.princ.	4	med.gen	PL	1	BOTGROS VASILICA
56	asist.medical princ	3	med.gen	PL	1	FRANGHIU DANA VIORICA
57	asist.med.princ.	5	med.gen	PL	1	BOTA DIANA
58	asist.med.princ.	4	med.gen	S	1	RADU ANDREEA
59	asist.med.princ.	4	med.gen	S	1	STRUGARI ANISOARA
60	asist.medical jr	2	med.gen	PL	1	VACANT delegat DEDIU ANDREEA
TOTAL PERS.MEDIU SAN.						

61 infirmiera

62 infirmiere

61	infirmiera	0		G	1	VACANT
62	infirmiere	0		G	1	VACANT
TOTAL						

UNITATE DE TRANSFUZIE SANGUINA

63	medic specialist	2	ATI	S	1	PEL FOLDI ANDREA EDINA
TOTAL MEDICI						

PERSONAL MEDIU SANITAR SECTIE

64	asist.medical	0	med.gen	PL	1	MIZU LAURENTIU
65	asist.medical	0	med.gen	PL	1	VACANT
TOTAL PERS.MEDIU SAN.						
TOTAL GENERAL						

SECTIA OBSTETRICA GINECOLOGIE, NUMAR PATURI = 25 din care 10 NEONATOLOGIE

66	medic sef sectie obstetrica, g	5	obst.gin. S	1	VACANT	CHAHEM NEDAL
67	medic primar	5	obst.gin. S	1	MINCIU EUGENIA PEI	medicant in activitate
68	medic primar	5	obs.gin. S	1	CHAHEM NEDAL	POST FIX
<b>TOTAL MEDICI</b>						
<b>AMBULATORIU INTEGRAT</b>						
<b>CABINET OBSTETRICA GINECOLOGIE</b>						
69	medic specialist	2	obst.gin. S	1	VACANT	
70	medic specialist	2	obst.gin. S	1	BARBULESCU AURA	
71	asistenta med prinic	3	med.gen. PL	1	IOZSA MIHAELA	
72	asistenta med prinic	2	med.gen. PL	1	LANGOS ERIKA TUNDI	

<b>PERSONAL MEDIU SANITAR SECTIE</b>						
73	asist.med.	2	med.gen. S	1	CORNUT OANA STEFANIA	
74	asist.med.prinic	5	obst.gen. PL	1	SARAROLBAN CARMEN	
75	asist.med.prinic sefa deleg.	5	obst.gin. PL	1	CIUMPIEAC TEODORA	
76	asist.med.prinic	5	obst.gin. PL	1	MOT HELGA	
77	asist.med.prinic	5	obst.gin. PL	1	VLAD LENUȚA	
78	asist.med.prinic	5	obst.gin. PL	1	BALABAN RAMONA	
79	asist.med.prinic	2	med.gen. PL	1	ROSU PETRONELA OBRORGIANA	
80	asist.med.	0	med.gen. PL	1	VACANT	
81	asistenta med prinic	2	med.gen. PL	1	BRADFORD CAMELIA	
<b>TOTAL PERS.MEDIU SAN</b>						

<b>PERSONAL AUXILIAR</b>						
82	infirmera	0		G	VICHERTE ESTERA	
83	infirmera	5		G	VOIDA ANGELA	
84	ingrijitoare	0		G	VACANT	
85	ingrijitoare	0		G	VACANT	
86	infirmera	0		G	VACANT	
87	ingrijitoare	0		G	VACANT	
88	ingrijitoare	4		G	PETROVAN MIHAELA	
89	infirmera	5		G	PAVLOV ANGELICA	
<b>TOTAL PERS.AUXILIAR</b>						
<b>TOTAL GENERAL</b>						

OBSTETRICA GINECOLOGIE-COMPARTMENT NEONATOLOGIE

<b>NUMAR PATURI = 10</b>						
90	medic specialist	2	neonatoId.S	1	VACANT	
<b>PERSONAL MEDIU SANITAR SECTIE</b>						
91	asist.med.prinic	5	pediatrie PL	1	VINTAN COBINA	
92	asist.med.	3	med.gen. PL	1	NEGOT ALEXANDRA	
93	asist.med.	0	pediatrie PL	1	VACANT	
94	asist.med.	0	med.gen. PL	1	BILT ANCA STEFANIA	
95	asist.med.principal	5	med.gen. PL	1	COLPOS VESNA	
96	asistent medical	2	med.gen. PL	1	CIUREL ALINA	
<b>TOTAL PERS.MEDIU SAN</b>						

<b>PERSONAL AUXILIAR</b>						
97	infirmera	5		G	TANASIE MARIANA	
98	ingrijitoare	5		G	IOANGA MARIANA	
99	infirmera	5		G	IOVA LILIANA	
100	ingrijitoare	3		G	DAMIAN GIURGEVCA	
101	infirmera	5		G	LEOPOLD IUDIKO	
<b>TOTAL PERS.AUXILIAR</b>						
<b>TOTAL GENERAL</b>						

SECTIA PEDIATRIE+AMBULATORIU INTEGRAT-CABINETI SPEC.PEDIATRIE

NUMAR PATURI = 25					
102	medic sef sectie pediatrie	5	pediatrie S	1	NEDELEA EMIL ARON
103	medic primar	5	pediatrie S	1	LUNGU MIHAELA
104	medic primar	5	pediatrie S	1	NEDELEA EMIL ARON
105	asistent social	0	asis social S	1	VACANT
TOTAL MEDICI					
AMBULATORIU INTEGRAT					
CABINET PEDIATRIE					
106	medic specialist	2	pediatrie S	1	VACANT
107	asistent med.	0	med.gen. PL	1	VACANT
108	asistent med.princ.	2	med.gen. S	1	ROGNEAN BERNIAMIN
PERSONAL MEDIU SANITAR SECTIE					
109	asist.med.princ.	5	med.gen. PL	1	LEBER ANDREA
110	asist.med.princ.	5	pediatrie PL	1	TATARLIOV CAMELIA
111	asist.med.princ.	5	pediatrie PL	1	VASILCIN ECATERINA
112	asist.med.princ. Asist sefa de	4	med.gen. PL	1	ION MIHAELA
113	asist.med.princ.	5	med.gen. PL	1	GRIGORAS HEIDEL IRINA
114	asis.med.	0	med.gen. PL	1	VACANT
115	asis.med.	0	med.gen. PL	1	VACANT
116	asist.med.princ.	5	pediatrie PL	1	NEGESCU MARIA MIHAELA
TOTAL PERS MEDIU SAN.					
PERSONAL AUXILIAR					
117	ingrijitoare	3	G	1	CAPRUCIU CORINA
118	infiriera	3	G	1	CAPRAR ANDREEA
119	infiriera	5	G	1	LESCHE RODICA
120	infiriera	5	G	1	NEGOT MARIA
121	ingrijitoare	3	G	1	VACANT
122	infiriera	5	G	1	VACANT
123	ingrijitoare	1	G	1	FIBISAN AGNES
TOTAL PERS AUXILIAR					
TOTAL GENERAL					

ow

ow

SECTIA MEDICINA INTERNA CRONICI

NUMAR PATURI = 35

124	medic sef sectie	2	med.int.	S	1	VACANT	PARALESCU SORIN BOGDAN
125	medic primar	5	med.int.	S	1	COSTACHE STEFAN	membrut in activitate
126	medic specialist	4	med.int.	S	1	PARALESCU SORIN BOGDAN	
127	medic specialist	2	med.int.	S	1	VOCHITA ANCA ANDREEA	
<b>TOTAL MEDICI</b>							
<b>PERSONAL MEDIU SANTAR SECTIE</b>							
128	asist.med. principala sefa (dl)	4	med.gen.	PL	1	BALU MIRELA	
129	asist.med.priac.	5	med.gen.	PL	1	GOGOLOSI MARINELA	
130	asist.med.priac.	0	med.gen.	PL	1	HERMAN LAURA	
131	asistent medical	0	med.gen.	PL	1	VACANT	
132	asistent medical pr	5	med.gen.	PL	1	MATEI ADELA	
133	asistent medical pr.	2	med.gen.	PL	1	MOISICI VESNA	
134	asistent medical	2	med.gen.	PL	1	VACANT	
135	asistent medical	4	med.gen.	PL	1	VERES GHIZELA	
<b>TOTAL PERS.MEDIU SAN.</b>							
<b>PERSONAL AUXILIAR</b>							
136	infirmera	2		G	1	MORAR SNEJANA	
137	infirmera	5		G	1	MARINCA ANUTA	
138	infirmera	2		G	1	VACANT	
139	infirmera	2		G	1	VACANT	
140	ingrijitoare	4		G	1	CIOCOV LILIANA	
141	ingrijitoare	2		G	1	SIMEDREA HANELORE	
142	ingrijitoare	3		G	1	VACANT	
143	ingrijitoare	2		G	1	VACANT	
<b>TOTAL PERS.AUXILIAR</b>							
<b>TOTAL GENERAL</b>							



COMPARTIMENT PREVENIRE CONTROL INFECTII NOSOCOMIALE

144	medic specialist	3	epidemiol.S	1	GASPAR CRISTINA MARIETA
TOTAL MEDICI					
PERSONAL MEDIU SANITAR SECTIE					
145	asistat igiena	5	igiena	PL	PANEA ALINA
TOTAL PERS. MEDIU SAN.					
TOTAL GENERAL					

LABORATOR ANALIZE MEDICALE, LAB. RADIOLOGIE IMAGISTICA MEDICALA STATISTICA, CABINETE INTE

LABORATOR ANALIZE MEDICALE					
146	medic primar	5	laborator S	1	DUMITRESCU ANA CRISPENDAT
TOTAL MEDICI					
PERSONAL MEDIU SANITAR					
147	asist.med.	0	med.gen.	PL	VACANT
148	asist.med.pnnc.	5	lab.+obst	PL	GRECU LUMINITA ELENA
149	asist.med.pnnc.sef	5	med.+lab	M	BABACEA CAMELIA
TOTAL PERS. MEDIU SAN.					
PERSONAL AUXILIAR					
150	ingrijitoare	0	G	1	VACANT
TOTAL PERS. AUXILIAR					
TOTAL GENERAL					

LABORATOR RADIOLOGIE IMAGISTICA MEDICALA

RADIOLOGIE					
151	medic primar	5	radiologil.S	1	CALIN IOANA SILVIA
TOTAL MEDICI					
PERSONAL MEDIU SANITAR					
152	asist.med.pnnc.	5	radiologid	PL	MUNTEAN VIORICA
153	asist.med.pnnc.	5	radiologid	PL	BAROANA LAURA
TOTAL PERSONAL MEDIU					
TOTAL					

AMBULATORIU INTEGRAT  
CABINET OFTALMOLOGIE-FARA CORESPONDENT PE SECTIE

CAROTI ALMOLOGIE	3 ofthalmolo's	1 SZIGYARTO ELENA
154 medic primar	0 med.gen. PL	1 VACANT
155 asistent medical		
TOTAL MEDICI		

AMBULATORIU INTEGRAT  
CABINET NEUROLOGIE-FARA CORESPONDENT PE SECTIE

156 medic specialist	2 neurologis	1 TARANU ANDA MARIA
157 asistent medical	0 med.gen. PL	1 VACANT
TOTAL MEDICI		

AMBULATORIU INTEGRAT  
CABINET HOLI DE NUTRIIE -DIABET-FARA CORESPONDENT PE SECTIE

158 medic primar	4 diabet -b/s	1 LUPASCU NICOLETA
159 asistent medical	4 med.gen. PL	1 SLAVU MIRELA NATALIA
TOTAL MEDICI		
AMBULATORIU INTEGRAT		
CABINET HOLI DE INFECTIOSE-FARA CORESPONDENT PE SECTIE		
160 medic primar	3 boli infectio's	1 VOCHITA LAURENTIU CONSTANTIN
161 asistent medical. pr	2 med.gen. PL	1 SMALBERGER GABRI delegat internu
TOTAL MEDICI		

AMBULATORIU INTEGRAT  
CABINET ORTOPEDIE-TRAUMATOLOGIE - FARA CORESPONDENT PE SECTIE

162 medic primar	5 ortopedie's	CALIN CATALIN NICOLAE
163 asistent medical principal	3 med.gen. PL	1 TURCANU ANDREEA delegata chirurgie
TOTAL MEDICI		

AMBULATORIU INTEGRAT  
CABINET CARDIOLOGIE -FARA CORESPONDENT PE SECTIE

164	medic primar	3	cardiolog S	1	EMBER LICUTA ANDREEA
165	asistent medical	5	med.gen PL	1	CIOBANU ALINA
TOTAL MEDICI					

ALTE ACTIVITATI COMUNE

STATISTICA						
166	registrator medical pr.	5	M	FILIP ELISABETA	POST FIX.	
167	registrator medical pr.	3	M	MIRIC SIMONA	POST FIX	
168	registrator medical	4	M	LISMAN DANIELA	POST FIX	
169	registrator medical pr.	3	M	BARANTIC ADINA	POST FIX	
170	registrator medical	5	M	BOLOG CARMEN ELE	POST FIX	
171	registrator medical	0	M	VACANT	POST FIX -	
172	bransaler	0	G	VACANT	POST FIX -	
173	bransaler	0	G	VACANT	POST FIX -	
<b>TOTAL</b>						



00

00

SPALATORIE  
PERSONAL AUXILIAR

178 Spalatorie	4	G	1 VACANT
179 Spalatorie	5	G	1 RUS CRISTINA
180 Spalatorie	5	G	1 FLOREA VERGINICA
TOTAL GENERAL			

OL

OL

BIROUL DE MANAGEMENT AL CALITATII SERVICIILOR MEDICALE					
181 medic		0	S		1 VACANT
182 consilier juridic IA		5	S		1 VACANT
<b>TOTAL GENERAL:</b>					





MUNCITORI  
BLOC ALIMENTAR

199	muncitor II	5	bucatar	G	1	ROSU ILEANA VIORICA
200	muncitor IV	4	bucatar	G	1	VACANT
201	muncitor II	5	bucatar	G	1	IONAS OVIDIU
202	muncitor ne calificat I	2		G	1	CAPRAR MARIOARA
203	muncitor ne calificat I	0		G	1	TETCU MONICA
<b>TOTAL</b>						
<b>MUNCITORI INTRETINERE</b>						
204	muncitor IV	0	fochist	G	1	SECOSAN DANIEL
205	muncitor IV	0	fochist	G	1	VACANT
206	muncitor IV	3	fochist	G	1	PETRASCU DANIEL
207	muncitor III	5	Fochist/zf	G	1	FULOOF STEFAN OVIDIU
208	muncitor IV	3	fochist	G	1	VACANT
209	muncitor III	4	fac.mecan	G	1	VACANT
210	muncitor III	4	electrician	G	1	FIBISAN SORIN CONSTANTIN
211	muncitor IV	5	instalator	G	1	MALUTAN PETRU
212	muncitor ne calificat I	4		G	1	VACANT
213	muncitor ne calificat I	5		G	1	PETROV PETRICA
214	muncitor ne calificat I	5		G	1	PAVLOV IOTA
215	muncitor ne calificat I	4		G	1	FURDUI DAN
<b>TOTAL MUNCITORI</b>						
<b>TOTAL STAT FUNCTII</b>						

215

La salariul de Baza-1385312 se mai adauga

spor tura-40000

spor conditii 120000

spor S/D-80000

spor ore garda 90000

indemnizatie hrana-75000

alte drepturi de personal-119400

TOTAL GENERAL 1969712



MANAGER  
DR. LUCĂ CLAUDIA MARIA

DIRECTOR FIN. CONTABIL  
EC. PREDESCU JOANA SIMONA

SEF BIROU RPNOS  
TIG LILIANA